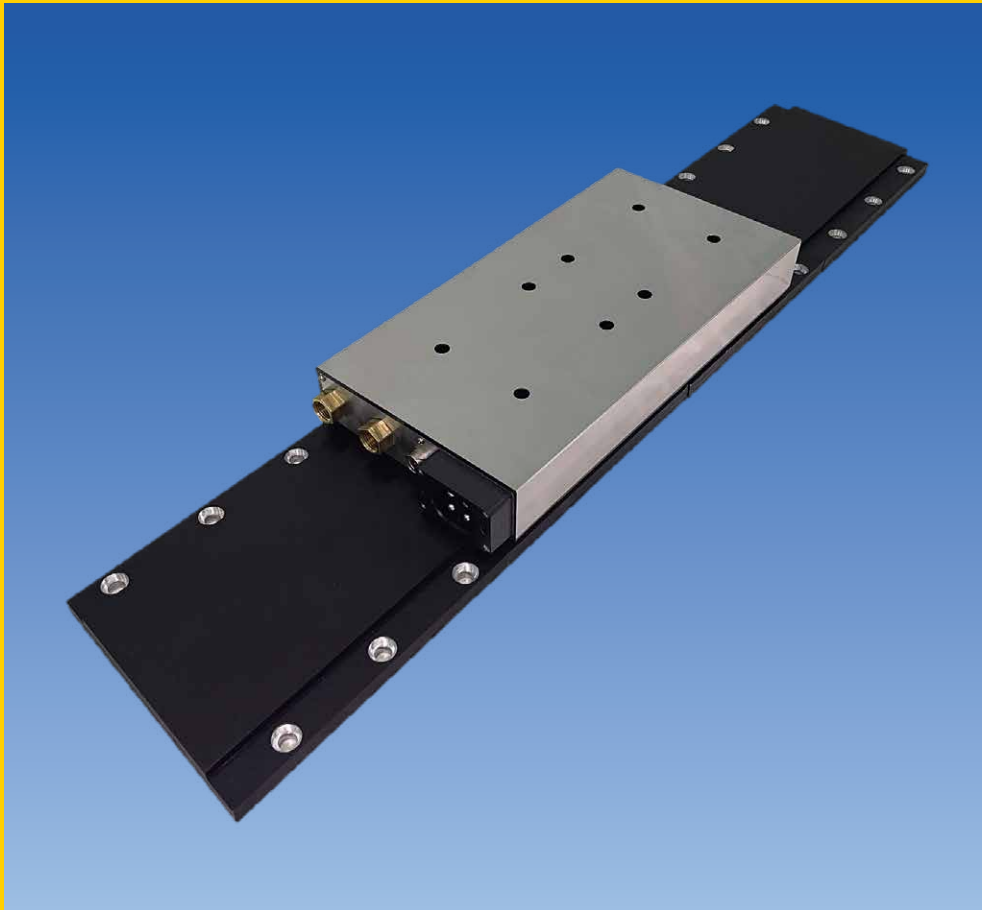


Linear Motor Achieving High Speed and High Precision Feed

FANUC

LINEAR MOTOR *LiS-D* series



Linear Motor Achieving High Speed and High Precision Feed

FANUC LINEAR MOTOR *LiS-D* series

Features

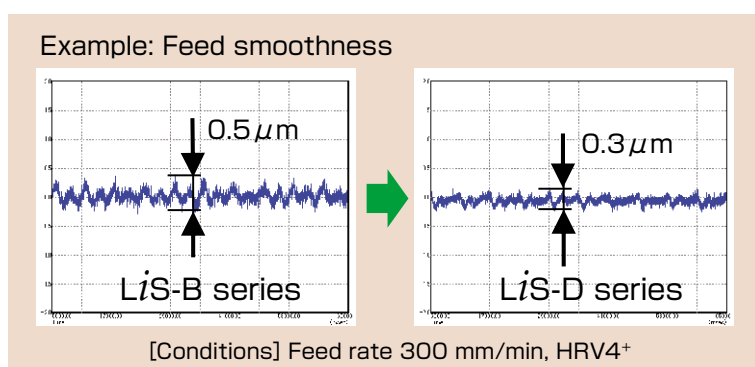
- Linear Motor *LiS-D* series does not use any parts that deform or wear in its mechanical unit, such as ball screws. This enables to achieve higher gain due to enhanced servo system rigidity and higher precision, also making the mechanical unit maintenance-free.
- Linear motor enables flexible axis configurations, such as rigid, long-stroke axes, multi-head configurations, tandem configurations.
- This series is the most suitable for use with machines that require high speed, high acceleration, and high precision feed.



High-speed, high-precision, high-quality machining

High-precision, high-quality machining

- Linear Motor *LiS-D* series has reduced cogging with the optimized motor magnetic circuit. It enables high-precision, high-quality machining with smoother feed.

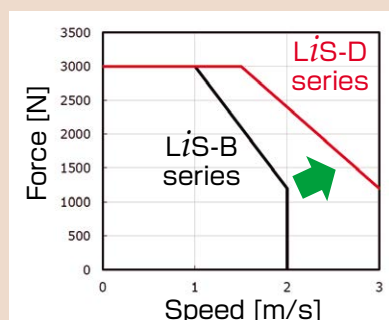


- Cooling tube embedded around the winding enables to carry out heat efficiently. Also, Linear Motor *LiS-D* series has achieved further reduction in heat generation. The minimized motor heat effect to the machine contributes to enhanced machine precision.

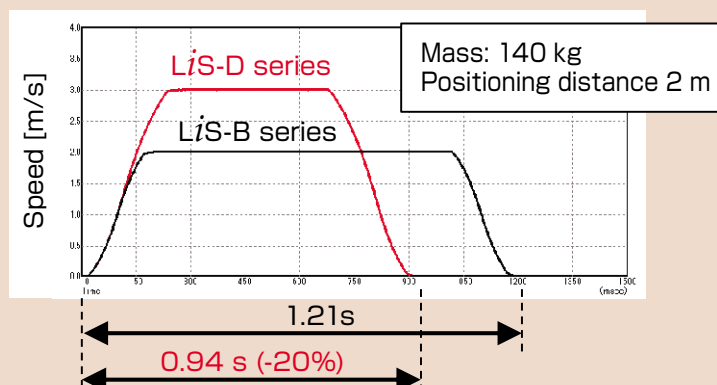
Reduced cycle time

- The enhanced maximum speed enables high-speed positioning, contributing to reduced cycle time. (The effect differs depending on the model and operating conditions.)

Example: Speed-force characteristic

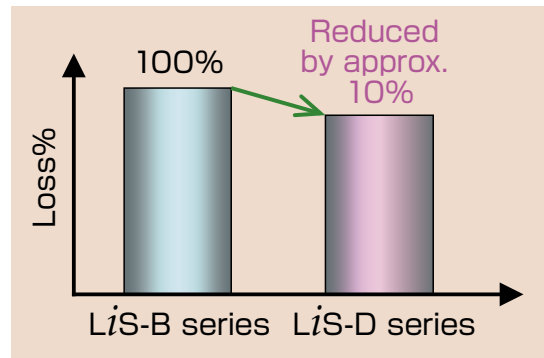


Example: Cycle time reduction (rapid traverse)



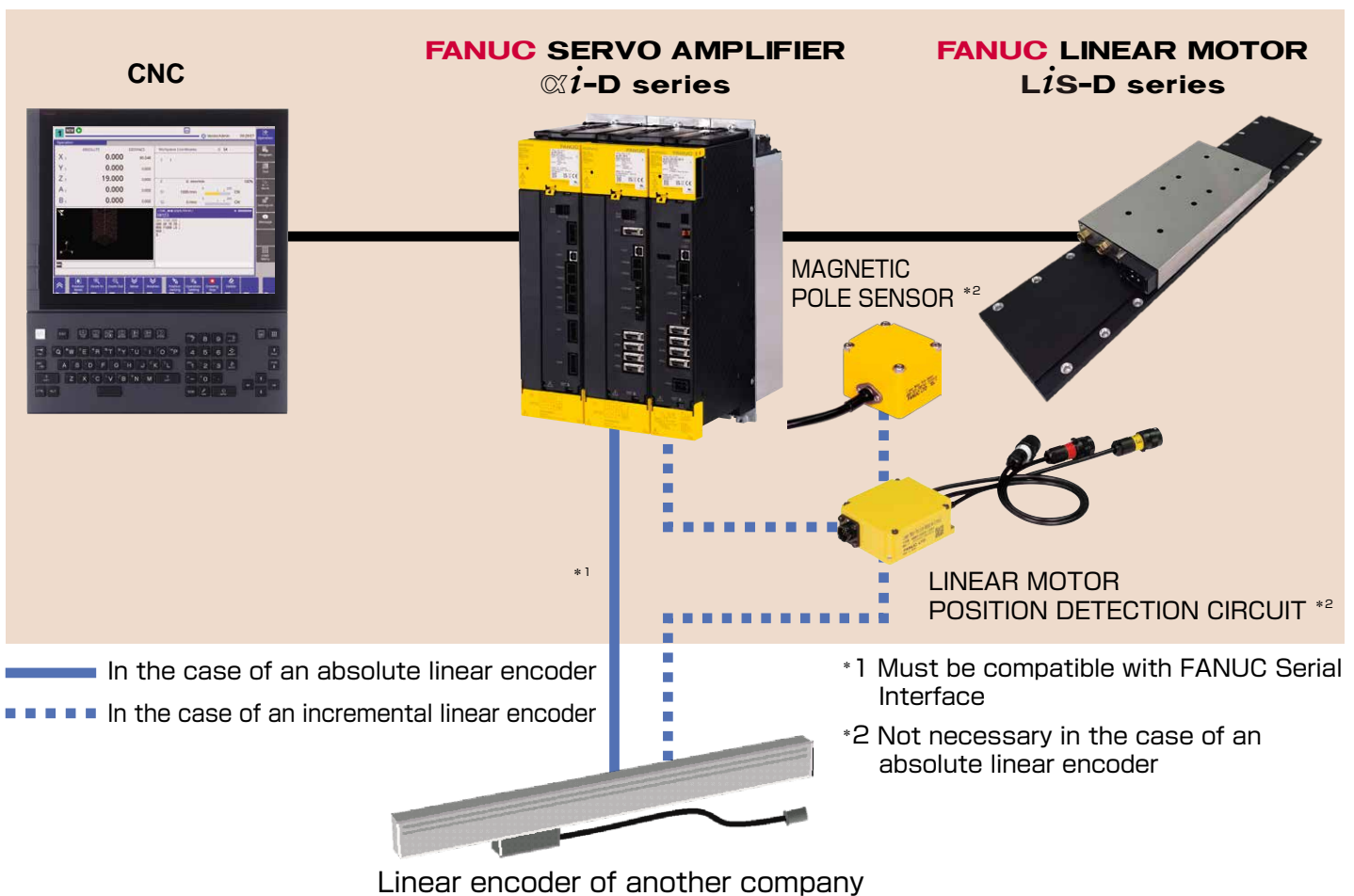
Energy saving

- The optimized motor magnetic circuit provides reduced motor loss, which contributes to machine energy saving. (The reduction rate differs depending on the model and operating conditions.)



System configuration

FANUC's products



Service & Support

Excellent Maintenance Services

FANUC service team delivers customer trust and confidence based on direction of service “Maximizing Uptime”, “Global Service” and “Lifetime maintenance”.

Service First

Conforming to the spirit of “Service First”, FANUC provides lifetime maintenance to its products for as long as they are used by customers, through more than 270 service locations supporting more than 100 countries and regions throughout the world.

Maximizing Uptime



FANUC ACADEMY

FANUC ACADEMY operates versatile training courses to develop skilled engineers effectively in several days.



FANUC CORPORATION

● Overseas Affiliated Companies

FANUC America Corporation

FANUC Europe Corporation, S.A.

BEIJING-FANUC Mechatronics CO., LTD

KOREA FANUC CORPORATION

TAIWAN FANUC CORPORATION

FANUC INDIA PRIVATE LIMITED

Phone: (+1)248-377-7000

Phone: (+352)727777-1

Phone: (+86)10-6298-4726

Phone: (+82)55-278-1200

Phone: (+886)4-2359-0522

Phone: (+91)80-2852-0057

● Headquarters 3580, Shibokusa, Oshino-mura,
Minamitsuru-gun Yamanashi, 401-0597, JAPAN
Phone: (+81)555-84-5555 <https://www.fanuc.co.jp/>

<https://www.fanucamerica.com/>

<https://www.fanuc.eu/>

<https://www.bj-fanuc.com.cn/>

<https://www.fkc.co.kr/>

<https://www.fanuctaiwan.com.tw/>

<https://www.fanucindia.com/>

• All specifications are subject to change without notice.
• No part of this catalog may be reproduced in any form.
• The products in this catalog are controlled based on Japan's "Foreign Exchange and Foreign Trade Law". The export from Japan may be subject to an export license by the government of Japan. Further, re-export to another country may be subject to the license of the government of the country from where the product is re-exported. Furthermore, the product may also be controlled by re-export regulations of the United States government. Should you wish to export or re-export these products, please contact FANUC for advice.

© FANUC CORPORATION, 2024

LiS-D(E)-01, 2024.9, Printed in Japan